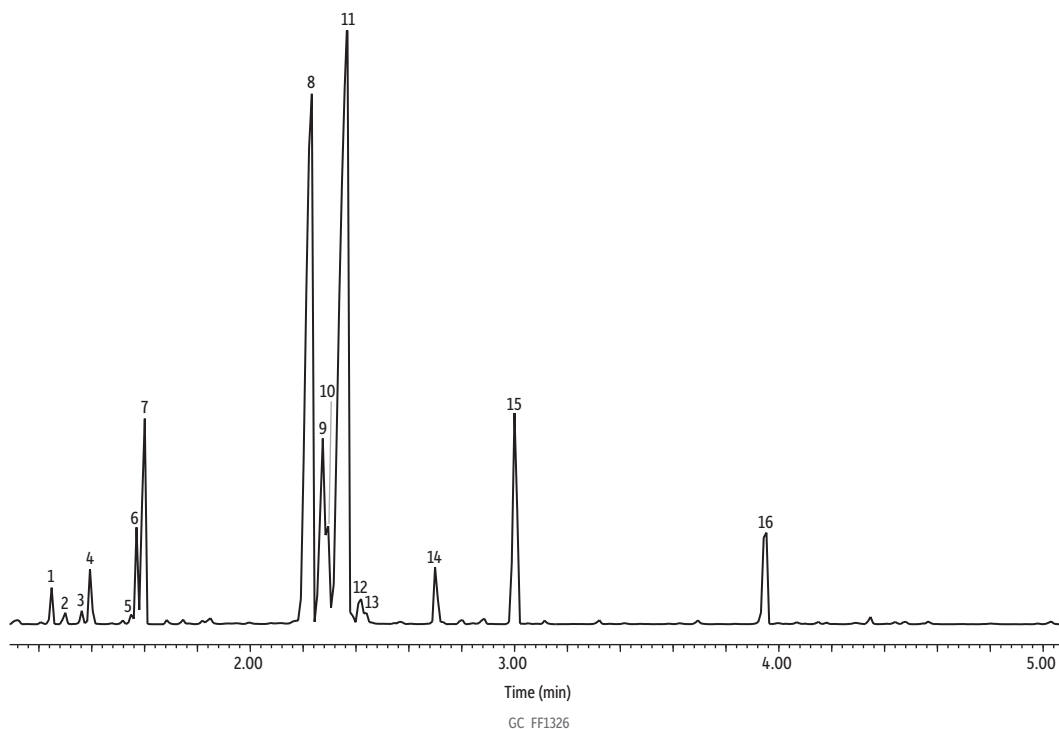


Peppermint Oil on Rxi-5Sil MS (20 m, 0.18 mm ID, 0.18 µm)



Peaks	tr (min)	Peaks	tr (min)
1. α-Pinene	1.253	9. Methone 2	2.274
2. 3-Methylcyclohexanone	1.304	10. Neoisomenthol	2.295
3. β-Phellandrene	1.367	11. Menthol	2.364
4. β-Pinene	1.399	12. Isomenthol	2.417
5. p-Cymene	1.551	13. α-Terpineol	2.440
6. D-Limonene	1.570	14. Pulegone	2.706
7. Eucalyptol	1.599	15. Menthyl acetate	3.006
8. Methone 1	2.231	16. Caryophyllene	3.953

Column Rxi-5Sil MS, 20 m, 0.18 mm ID, 0.18 µm (cat.# 43602)
Sample Peppermint oil
Diluent: Acetone
Conc.: 5%
Injection
Inj. Vol.: 1 µL split (split ratio 100:1)
Liner: Topaz 4.0 mm ID Precision inlet liner w/wool (cat.# 23305)
Inj. Temp.: 250 °C
Oven
Oven Temp.: 100 °C (hold 0.25 min) to 320 °C at 17.5 °C/min (hold 10 min)
Carrier Gas He, constant flow
Flow Rate: 1.01 mL/min
Detector MS
Mode: Scan
Scan Program:

Group	Start Time (min)	Scan Range (amu)	Scan Rate (scans/sec)
1	1.00	35-500	5

Transfer Line Temp.: 300 °C
Analyzer Type: Quadrupole
Source Type: Inert
Source Temp.: 230 °C
Quad Temp.: 150 °C
Instrument Agilent 7890A GC & 5975C MSD
Notes All peaks were identified using the NIST MS EI spectra library (2005).